

Other Special Models

PW-2413VH Semi-auto Pallet Wrapper

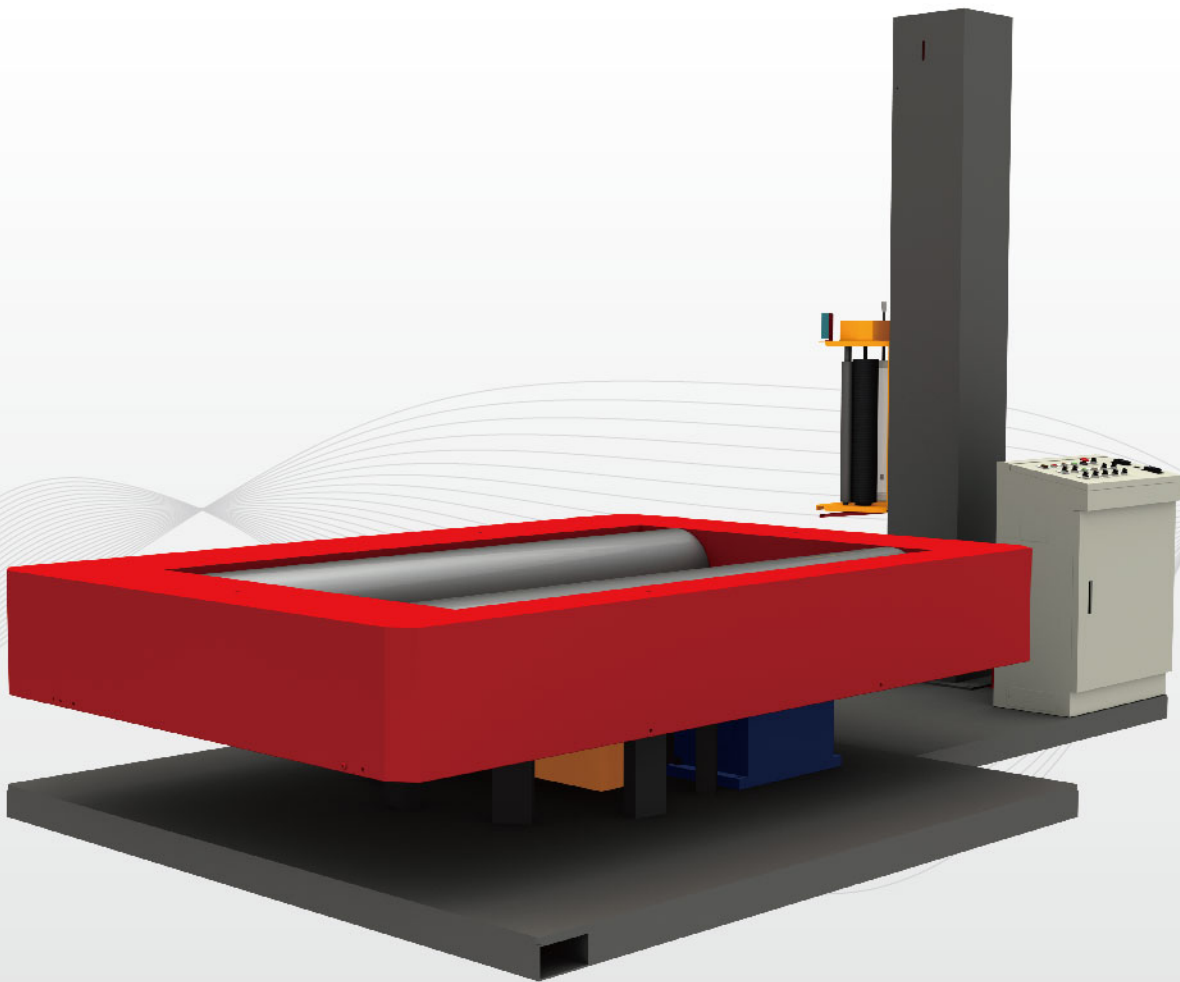
VH : PLC controls

For roll type products

Power	3Ø, 220/380/415/440V, 50/60 Hz
Turntable	2413 mm
Working Height	1350 mm
Roller Size	O.D.265Ø,Shaft 50Ø,length 2600mm
Film Carriage	Power Pre-stretch (PT)
Loading Weight	2000 Kgs (Max.)
Machine size	L2732xW1642xH2421mm

Options

- Safety fence
- Customized loading weight



PW-2413VH

Features

- Inverter controls speed of motor, allowing perfect speed adjustment.
- Carriage head and turntable driven by chain for durability and stability during machines' operation.
- Automatic or Manual Mode/ Soft Start, Stop for safety