



PW-1521RA-T2 Pallet Wrapping Machine

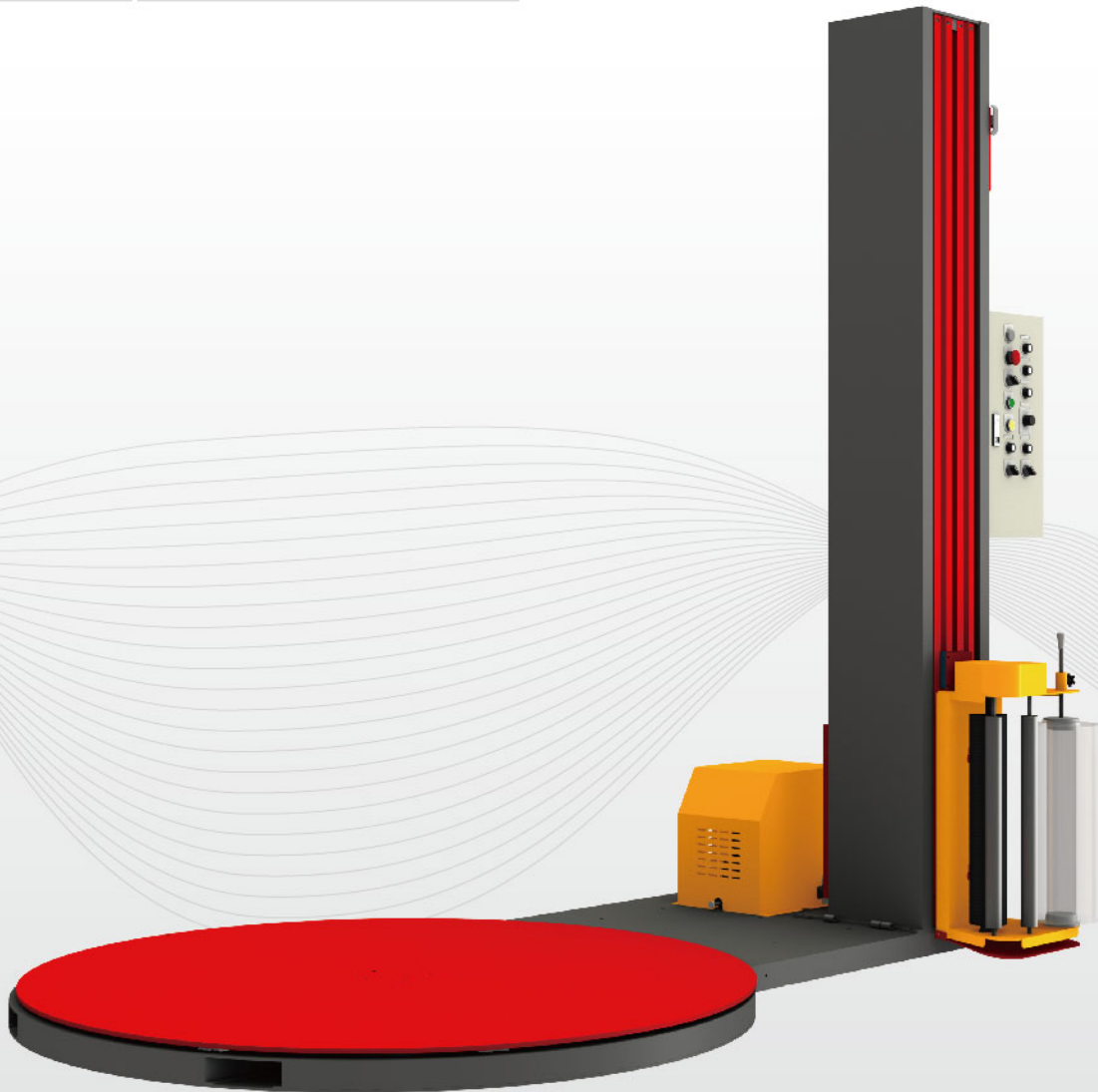
RA : PCB & traditional switch control

T2 : Electromagnetic brake type

Power	1Ø, 220/230/240V, 50/60Hz
Turntable Dia.	1500 mm
Wrapping Height	2100 mm
Turntable Speed	5 ~ 15 RPM (Adjustable)
Film Carriage Speed	2 ~ 5 M/min. (Adjustable)
Loading Weight	2000 Kgs
Machine size	L1510 x W2740 x H2421mm

Options

- Access ramp
- Turntable diameter Ø1650, Ø1800
- Wrapping height 2400mm, 2700mm
- Film carriage head choices:
T1, T2 / PT, PT1, PT2, PT3, VPT / PF



PW-1521RA-T2

Features

- Inverter controls speed of motor, allowing perfect speed adjustment.
- Carriage head and turntable driven by chain for durability and stability during machines' operation.
- Automatic or Manual Mode/ Soft Start, Stop for safety